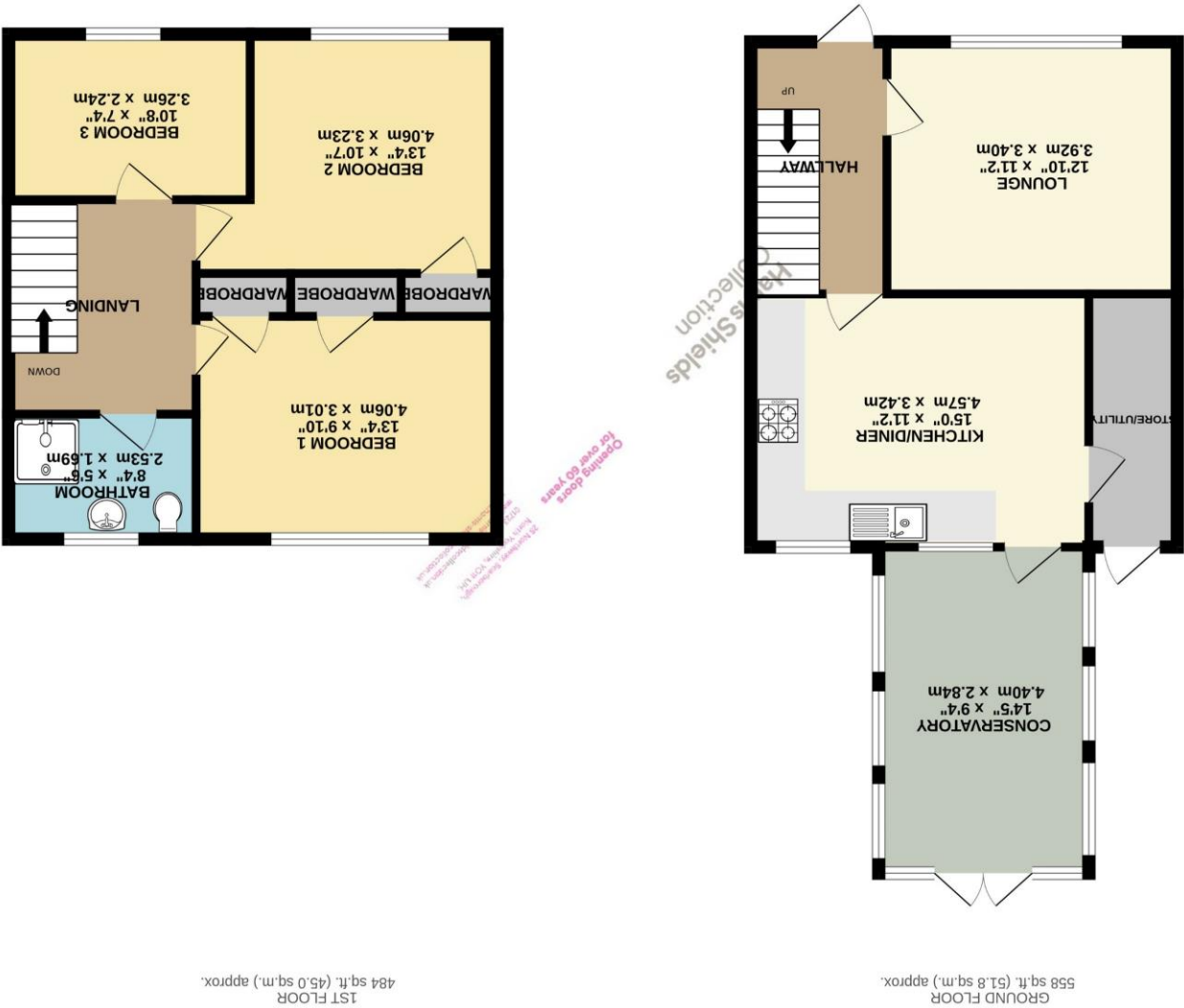


While every attempt has been made to ensure the accuracy of the floorplan contained here, measurements of doors, windows, doors and any other items are approximate and no responsibility is taken for any error, omission or misstatement. This plan is for illustrative purposes only and should be used as such by any prospective purchaser. The services, systems and appliances shown have not been tested and no guarantee as to their operability or efficacy can be given.  
Made with Mapbox ©2025





A three bedroom terraced house

- ✓ Mid Terraced Home
- ✓ Three Bedrooms
- ✓ Conservatory Also
- ✓ No Onward Chain
- ✓ On A Cul-De-Sac Location
- ✓ Some Updating Required
- ✓ Ideal First Time Buy Or Buy To Let

Guide Price £120,000

Harris Shields Collection

Harris Shields Collection, 25 Northway, Scarborough North Yorkshire, YO11 1JH

01723 341557  
mail@harris-shieldscollection.uk  
<https://harris-shieldscollection.uk/>

**Description**  
Offered to the market with no onward chain, this well-proportioned three-bedroom mid-terraced property presents a fantastic opportunity for first-time buyers, investors, or those looking to put their own stamp on a home. The accommodation comprises: a welcoming entrance hallway leading to a bright and spacious lounge, a kitchen/diner offering ample space for family meals, and a side storage/utility room providing valuable additional space. To the rear, a generous conservatory opens onto the enclosed garden, ideal for relaxing or entertaining. Upstairs, the property features two double bedrooms, both with built-in storage, a third single bedroom, and a wet room-style bathroom. Externally, the property offers low-maintenance front and rear gardens, both mainly laid to patio, providing year-round usability. While some modernisation is required, including updating part of the electrical system and installing central heating (gas supply is already to the property), the home offers excellent potential for improvement and personalisation. Located in a popular residential area with schools, shops, and local amenities close by, this is a home that's not to be missed.

**Additional Information**

Council tax band A

